



Users Manual

Thank you for choosing our product!

Your Heed QUASAR is a first-class MM/MC phono stage with outboard power supply which gives you the optimum connection between your cartridge and one of the line level inputs of your pre- or integrated amplifier and thereby allows you to enjoy your LPs to the highest fidelity possible in analogue reproduction. We sincerely hope that you will agree, and that your QUASAR will provide you with many years of impeccable, trouble-free operation.

Happy listening!

The QUASAR is designed to offer the finest performance available by avoiding compromise, wherever possible. This detailed guide contains advice specifically concerned with using this phono preamplifier, as well as more general warnings about the use of domestic audio components.

Please read it carefully.

Precautions

Instructions — All safety and operating instructions should be read and adhered to exactly as written here or as depicted on the unit. Please retain for future reference.

Water and Moisture — The unit should not be used near water — that is, near a bathtub, washbowl, kitchen sink, laundry tub, in a wet basement, or swimming pool, etc.

Heat — The unit should be situated away from heat sources such as radiators, stoves, etc..

Power Sources — The unit should be connected to a power supply only of the type described in the operating instructions or as marked on the unit.

Power-Cord Protection — Power-supply cords should be routed so that they are not likely to be walked on or pinched by items placed upon or against them, paying particular attention to cords at plugs, convenience receptacles, and the point where they exit from the unit.

Lightning — For added protection during a lightning storm, or when left unattended and unused for long periods of time, unplug the unit from the wall outlet. This will prevent damage to the product due to lightning and power-line surges.

Object and Liquid Entry — Care should be taken so that objects do not fall into and liquids are not spilled into the inside of the unit. For this reason, no objects filled with liquid, such as vases or drinking glasses should be placed on the equipment.

Damage Requiring Service — The unit should be serviced by qualified service personnel when:

- The power-supply cord or the plug has been damaged;
- Objects have fallen, or liquid has been spilled into the unit; or the unit has been exposed to rain respectively;
- The unit does not appear to operate normally or exhibits a change in performance;
- The unit has been dropped, or the cabinet damaged.

The QUASAR phono preamplifier and its outboard power supply do not have any user serviceable parts. It is essential that repairs and updates are only carried out by our authorised trade partners — distributors and dealers — , or at the factory by Heed Audio itself. Many components are custom made, tested or matched and appropriate replacements are often unobtainable from other sources.

⚠ Therefore, users should not attempt to service the units beyond those means described in the operating instructions, or under any circumstances allow anyone to modify them. Unauthorised repairs or modifications will invalidate the guarantee of the units.

Grounding or Polarization — Precautions should be taken so that the grounding or polarization is not defeated.

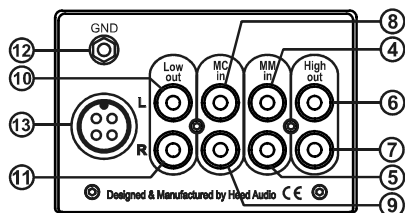
Radio interference — All Heed components are designed to provide reasonable protection against harmful interference in a domestic installation. However, there is no guarantee that interference will not occur in a particular installation. If your Quasar does cause harmful interference to radio or television reception, which can be determined by turning off and on, you are encouraged to try to correct the interference by one or more of the following measures:

- Reorient or relocate the receiving antenna;
- the separation between amplifier and receiver (radio tuner, television set, etc.);
- Connect the equipment into a power outlet on a circuit different from that to which the receiver is connected;
- your Heed dealer or an experienced radio/TV technician for help.

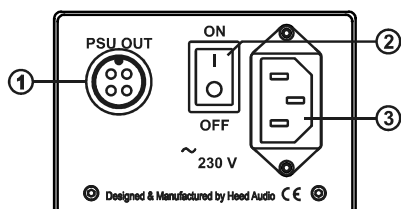
Maintenance / Cleaning — It is recommended to dust the equipment from time to time with a soft dry cloth.

**⚠ Do not use cleaning solvents or abrasives for cleaning!
Always switch off and unplug the unit from the power supply when cleaning!**

rear view



Quasar amplification unit



Q-PSU auxiliary power supply

1 Auxiliary Power Supply connector	8 MC input, left channel
2 Power on/off switch	9 MC input, right channel
3 Mains connector and fuse socket assy	10 Low Out connector, left channel
4 MM input, left channel	11 Low Out connector, right channel
5 MM input, right channel	12 Earthing (for tonarm cables only)
6 High Out connector, left channel	13 Auxiliary Power Supply connector IN
7 High Out connector, right channel	

First steps

We believe that a Heed Audio component should optimally be installed by an approved Heed dealer. Nevertheless, the procedure is straight-forward enough that you may install your new QUASAR phono preamplifier yourself by following the instructions contained herein. Should any problems be experienced which are not covered here, contact your local dealer. If you are unable to do so, or problems persist, however, do not hesitate to contact our distributor/reseller in your country (see our website <www.heedaudio.com> "worldwide distributors" for details), or contact us directly at Heed Audio ...we're here for you!

unpacking

When opening the boxes and unpacking the units, you will find the following items:

- (1) Heed Quasar MM/MC phono preamplifier (amplification unit)
- (1) Heed Q-PSU auxiliary power supply
- (1) special 4-pin PSU connection cable
- (1) IEC-norm mains power cord
- (1) 2.5 mm Allen key
- (1) Users Manual

placement

In common with all high-quality audiophile equipment, the QUASAR and its Q-PSU auxiliary power supply perform optimally when positioned on their own individual mounting surface, ideally a light rigid structure. There are many purpose-built examples readily available from all better dealers.

! Do not site the amplification unit near to your tonarm/cartridge. Due to the extremely low signal level (a few hundred microvolts) unwanted interferences may occur.

Installation

The Heed Quasar is a two-box device consisting of an amplification unit and an auxiliary power supply which must be connected to each other first.

connection of amplification unit and power supply

- ▽ Connect the supplied special PSU connection cable of the Q-PSU auxiliary power supply to the 4-pin PSU socket on the Q-PSU marked as PSU OUT (1) and on the Quasar marked as PSU IN (10) respectively.
- ▽ After plugging the power supply cable into both units, do not forget to tighten the plugs with their special tightening rings.

connection to mains supply

! Before performing any connections or disconnections, ensure that the on/off power switch (2) of the unit is in the 'off' position.

! Always check that the voltage and frequency of the mains supply corresponds to the specifications as marked on the unit!

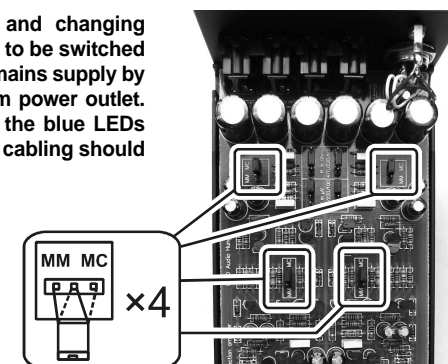
- ▽ Insert the power cord's IEC type plug into the power inlet connector (3) of the Q-PSU power supply.
- ▽ Connect the power cord's mains plug to your power outlet.

input connections

- ▽ Connect your record player to the Quasar by inserting the phono RCA plugs into one of the amplification unit's input connectors. They are unequivocally marked on the rear: use the connectors 1,2 if your cartridge is a moving-magnet (MM) type or 5,6 if it is moving-coil (MC).
- ▽ If an additional earthing is used with your record player — it is usually a small clip at the end of a thin wire beside the phono plugs —, it has to be connected to the grounding screw (GND) of the case next to the input sockets on the rear (9).
- ▽ **The Quasar is factory set for MC (100 μ V / 100 Ohm).** If you want to use a moving-magnet (MM) system you have to open the unit and switch over from MC to MM. You can change the jumper settings with a pair of tweezers, or even with your fingertips on the PCB inside of the amplification unit. Follow these steps:

! Before opening the housing and changing settings inside, the Quasar has to be switched off and disconnected from the mains supply by pulling out the mains plug from power outlet. Doing so, you must wait until the blue LEDs have gone out. All input/output cabling should be disconnected, too.

1. Remove the housing cover of the Quasar.
2. Change the positions of all four jumpers.
3. Refit the housing cover and fix it with the screws.



output connections

The amplification unit of the Quasar has to be connected to your amplifier (or preamplifier). The Quasar features two different outputs: the "Low Out" (10, 11) is recommended to older amplifier models from the seventies and eighties, whereas the "High Out" (6, 7) aiming at more modern amplifier designs. However, some experimentation might prove useful in determining which connection works best in your system. In addition to that, the "Low Out" is an ideal connection for users of recorders (cassette decks, etc.). You can use these outputs in the same time, that is, you can drive your amplifier whilst you are making recordings. If you are unsure which output fits your amplifier, contact your HEED dealer.

- ▽ Connect the output connectors (L and R) of the amplification unit — in all probability it is the "High Out" (3,4) connection you end up using — to one of the line-level input connectors (L and R) of your amplifier (preamplifier). You need a pair of interconnect cables fitted with RCA phono plugs.

! It is strongly recommended to use decent cables between your Quasar and your other hi-fi components connected to it — better quality interconnects can usually enhance the performance of your system. One of the best choices is our HEED ConCord cable. Your HEED dealer will certainly help you to choose the right connections for your particular set-up.

Operation

! Once the Quasar and its auxiliary power supply are connected to mains supply, as well as to turntable and main amplification, remove the protective film from both front panels. You can detach it by peeling off and grabbing the film at any of the corners.

Note: This step concerns only the appearance of the amplifier, it has no electrical or mechanical influence on the functioning of the unit.

When all steps of installation are correctly completed, your Quasar is ready for action!

! If your unit was transported or stored in cold environment allow it to warm up to room temperature before switching on!

- ▽ Switch on the units. You find the on/off switch (2) on the rear of the Q-PSU power supply unit. Being switched on, both units have their blue LEDs glowing.

- ▽ Proceed playing your record player as you usually do.

Note: Although you can use your Quasar within seconds of switching it on, as with all audio equipment the best sound quality will be reached after a period of warm-up time: a minimum of 30 minutes, preferably a couple of hours.

As the Quasar draws very little power, unless it is out of use for a long period, we recommend keeping the units switched on continually for optimum performance. However, your Quasar should be switched off if left unattended for extended periods, or in the event of thunderstorm.

! It is necessary for the QUASAR to be burned in for at least 4-5 days — possibly longer if not used intensively — before its full sound quality potential can be realised. Its performance is further improving during this period.

Cartridge fitting

Your Quasar comes preset with a typical moving coil cartridge setting of 100 μ V (65dB gain) and a load setting of 100 ohms. This will be fine for the majority of moving coil cartridges. If however your cartridge requires a different setting, it is possible to adjust these two input values by changing the jumper settings inside of the amplification unit.

! We strongly recommend that changes the jumper settings be carried out by your authorised Heed Audio dealer, so the description outlined below is for reference purposes only!

changing the jumper settings

You find the jumpers in two parallel rows (stereo pair) on the PCB, and can change their settings with a pair of tweezers, or even with your fingertips if you do it carefully. Follow these steps:

! Before opening the housing and changing settings inside, the QUASAR has to be switched off and disconnected from the mains supply by pulling out the mains plug from power outlet. Doing so, you must wait until the blue LEDs have gone out. All input/output cabling should be disconnected, too.

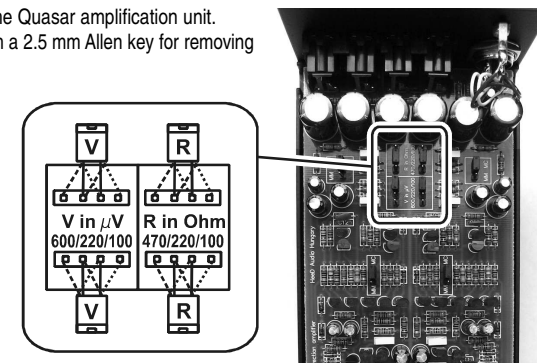
1. Remove the housing cover of the Quasar amplification unit.
(The Quasar comes supplied with a 2.5 mm Allen key for removing the screws.)

2. Change the positions of the jumpers as shown here.

4. Refit the housing cover and fix it with the screws.

5. Re-connect all cables — see "Input/Output Connections".

That s it!



In order to achieve optimum performance with your cartridge, it is essential to use input settings recommended by the manufacturer of the cartridge. You can find out the recommended values on the packaging or in the Users Manual of your cartridge. Alternatively, you can contact the cartridge manufacturer, your Heed dealer or us directly at Heed Audio.

SPECIFICATIONS

MM input:	3 mV / 47 kOhm / 100 pF
MC input – adjustable –, sensitivity:	100 μ V / 220 μ V / 600 μ V
impedance:	100 Ohm / 220 Ohm / 1 kOhm
Output voltage:	
"Low Out":	220 mV / 100 Ohm
"High Out":	775 mV (0 dBm) / 22 Ohm
Gain:	50 dB (MM)
	62-78 dB (MC, High Output)
Signal-to-noise ratio (A-weighted):	85 dB (MM)
	78 dB (MC)
Channel separation:	>90 dB
Distortion (THD, 1 kHz, 100mW):	<0,08%
Bandwidth:	3 Hz-150 kHz (+/-1dB)
RIAA accuracy:	20 Hz-20 kHz (+/-0.5dB)
Power consumption:	<10 W
Weight (amplification unit + Q-PSU):	3 kg

WARRANTY

If within three years of the purchase date your Heed QUASAR proves to be defective for any reason other than accident, misuse, neglect, unauthorised modification or fair wear and tear, Heed Audio Ltd. will, at its discretion, replace the faulty parts without charge for labour. This factory warranty is valid only for units sold into countries with no appointed Heed distributor. **Service enquiries in countries with appointed distributor should be addressed first to the supplying dealer and/or Heed distributor. Warranties granted in these countries are entirely at the discretion of distributor.**

DISTRIBUTOR CONTACT



FACTORY CONTACT

HEED Audio Kft. (Ltd)
Reviczky Gyula u. 9-11
H-1181 Budapest
Hungary

Tel/Fax: +36 1 2947401
eMail: info@heedaudio.hu

Web: www.heedaudio.com